

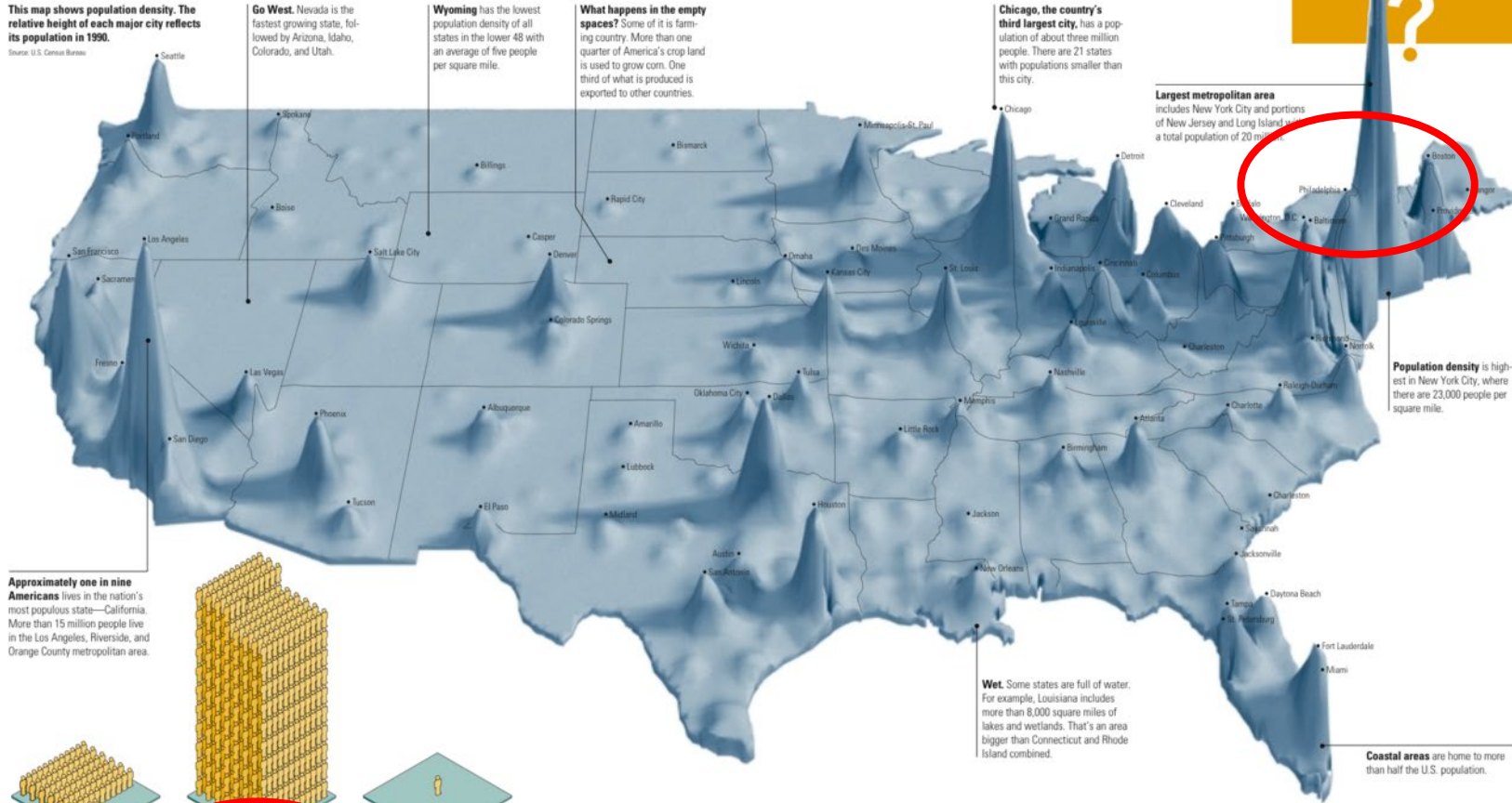


DELAWARE

The population of the United States is not distributed evenly. Instead, we tend to bunch up in communities, leaving the spaces in between more sparsely inhabited. Most Americans live in or near cities; today 53 percent live in the 20 largest cities. 75 percent of all Americans live in metropolitan areas.

This map shows population density. The relative height of each major city reflects its population in 1990.

Source: U.S. Census Bureau

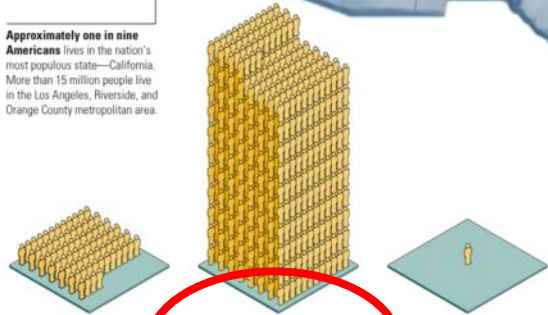


Population Distribution

*Where do we live?
Where don't we live?*

?

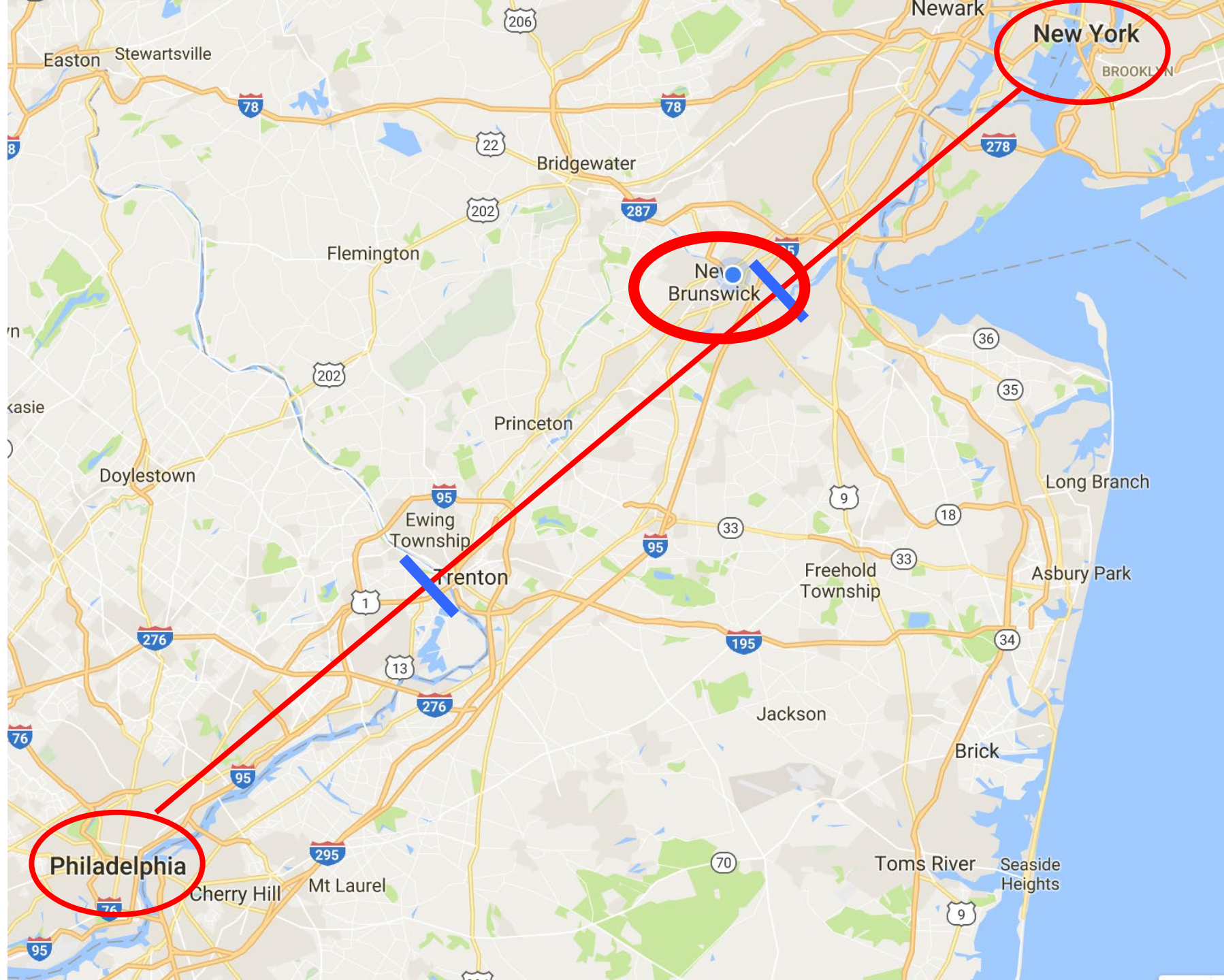
Approximately one in nine Americans lives in the nation's most populous state—California. More than 15 million people live in the Los Angeles, Riverside, and Orange County metropolitan area.



Distributing our population evenly would put an average of 76 people per square mile.

New Jersey is the most densely populated state with an average of more than 1,000 people per square mile.

Alaska is a sparsely populated state with an average of one person per square mile.



New Brunswick, NJ

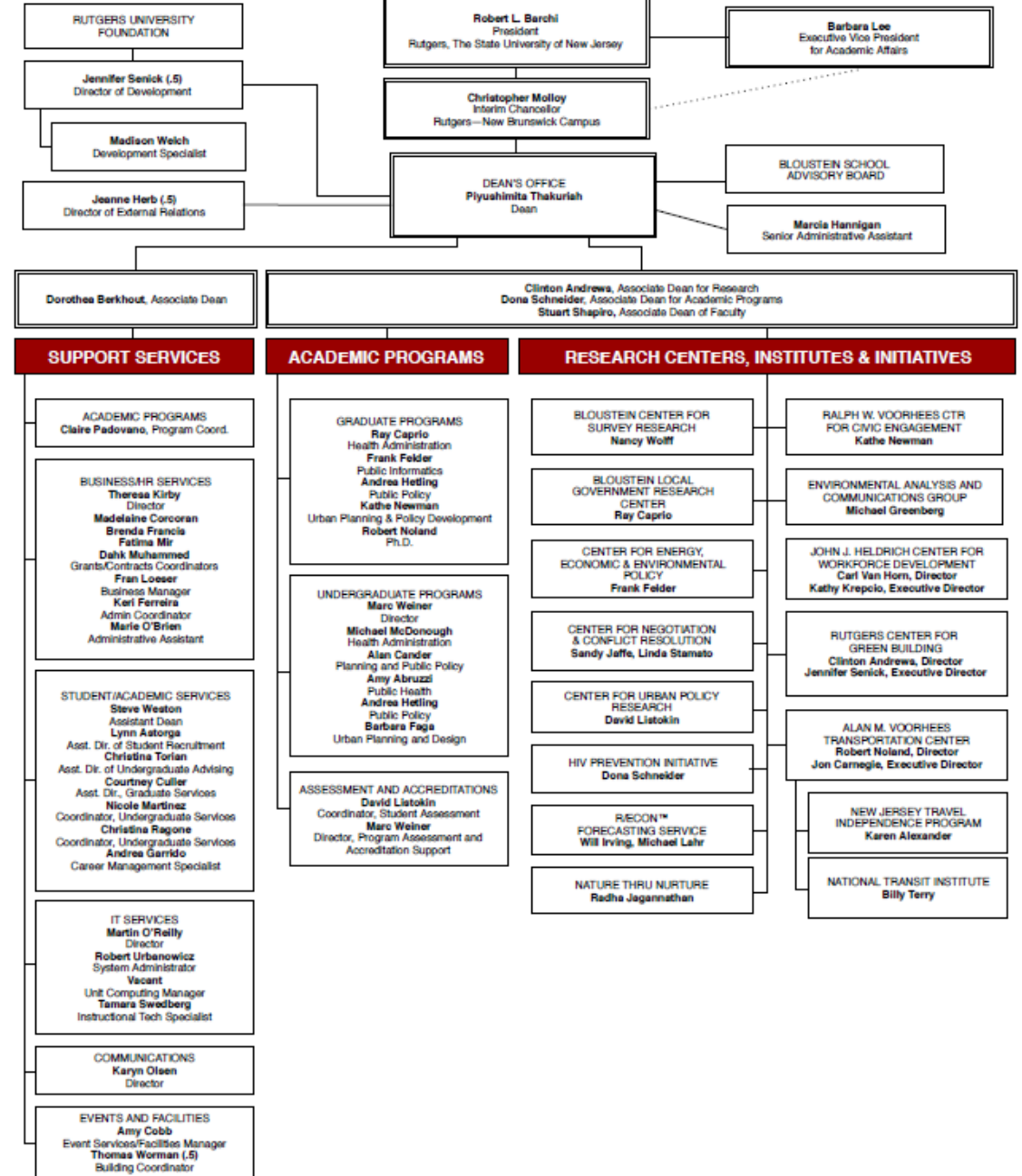


Edward J Bloustein School of Planning & Public Policy



Edward J Bloustein School of Planning & Public Policy, Rutgers University

EDWARD J. BLOUSTEIN SCHOOL OF PLANNING AND PUBLIC POLICY
ORGANIZATION CHART (MAY 2019)



Academic Programs

- Undergraduate
 - Public Policy (BS)
 - Urban Planning & Design (BS)
 - Planning & Public Policy (BA)
 - Public Health (BS)
 - Health Administration (BS)
- Graduate
 - Public Policy (MPP, MPAP)
 - Urban Planning (MCRP, MCRS)
 - Public Informatics (MPI)
 - Health Administration (MHA)
 - School-wide PhD



Planetizen

Top 10 Graduate Urban Planning Programs

	2019 RANK
Massachusetts Institute of Technology	1
University of California, Berkeley	2
Rutgers, The State University of New Jersey	3
University of California, Los Angeles	4
University of North Carolina, Chapel Hill	5
Harvard University	6
University of Pennsylvania	7
University of Southern California	8
University of Michigan	9
Georgia Institute of Technology	10

Source: Planetizen Guide to Graduate Planning Programs, 4th Edition
www.planetizen.com/topschools Copyright 2019 Planetizen

Master of Public Informatics

Theory & Practice of Public Informatics
Applied Multivariate Methods, Data Analytics, Graphical Communication, Intro to GIS, Topics in GIS, Capstone Project/Studio/Practicum, Electives

Graduate Certificates

Jointly with Engineering

- Transportation Studies
- Transportation Security
- Energy
- Coastal Climate Risk & Resilience

Others

- Geographic Information Science
- Historic Preservation
- Human Dimensions of Environmental Change
- Real Estate Development & Redevelopment



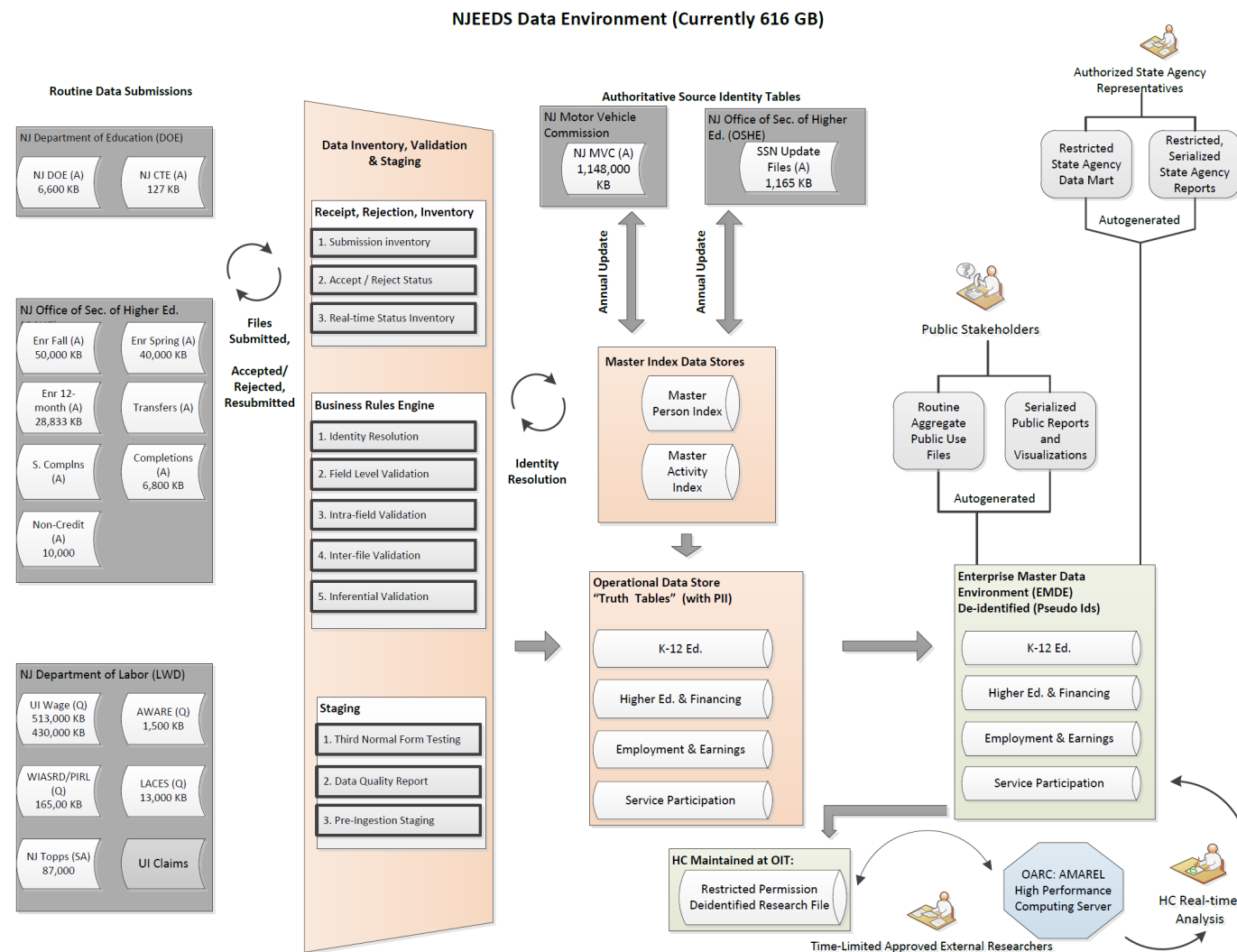
Transdisciplinary Perspectives on Coastal Climate Risk and Resilience, Climate Change Risk Analysis, Communicating Science to Decision-Makers, Coastal Studio, Electives in Natural Systems, Socio-Economic Systems & Engineered Systems

Research 1/2

Mining administrative data for policy insights

- State data repositories@ RU
- Fusing diverse data sets
- Data Analytics
- Protocols for Researchers

John Heldrich Center for Workforce Development



Research 2/2

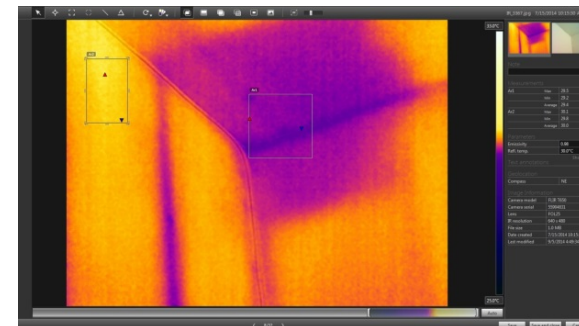
- Cost-Effective Detection of Multi-Family Housing-Related Health and Safety Hazards
- Imaging & computer vision, IAQ, interviews
- Rutgers Center for Green Building



RGB Image



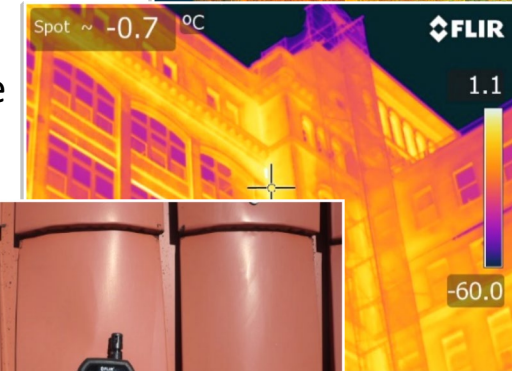
Poor Insulation



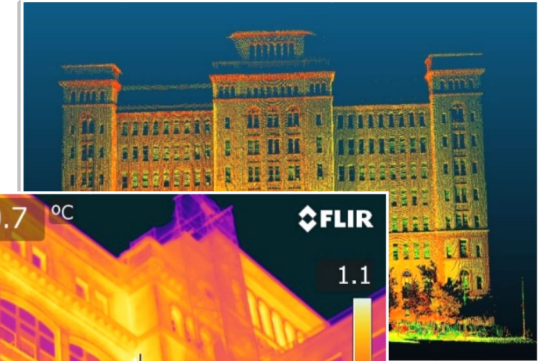
Temperature and Humidity



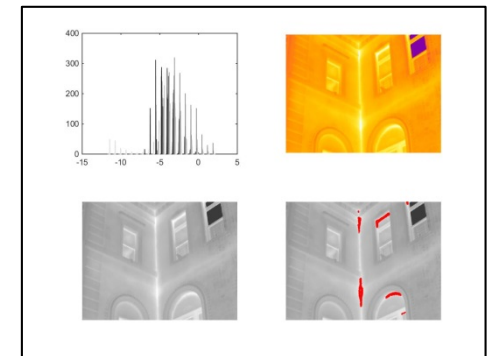
Infrared Image



LiDAR



Automated Defects Detection





RUTGERS

Thanks!

Clinton J Andrews
CJA1@RUTGERS.EDU